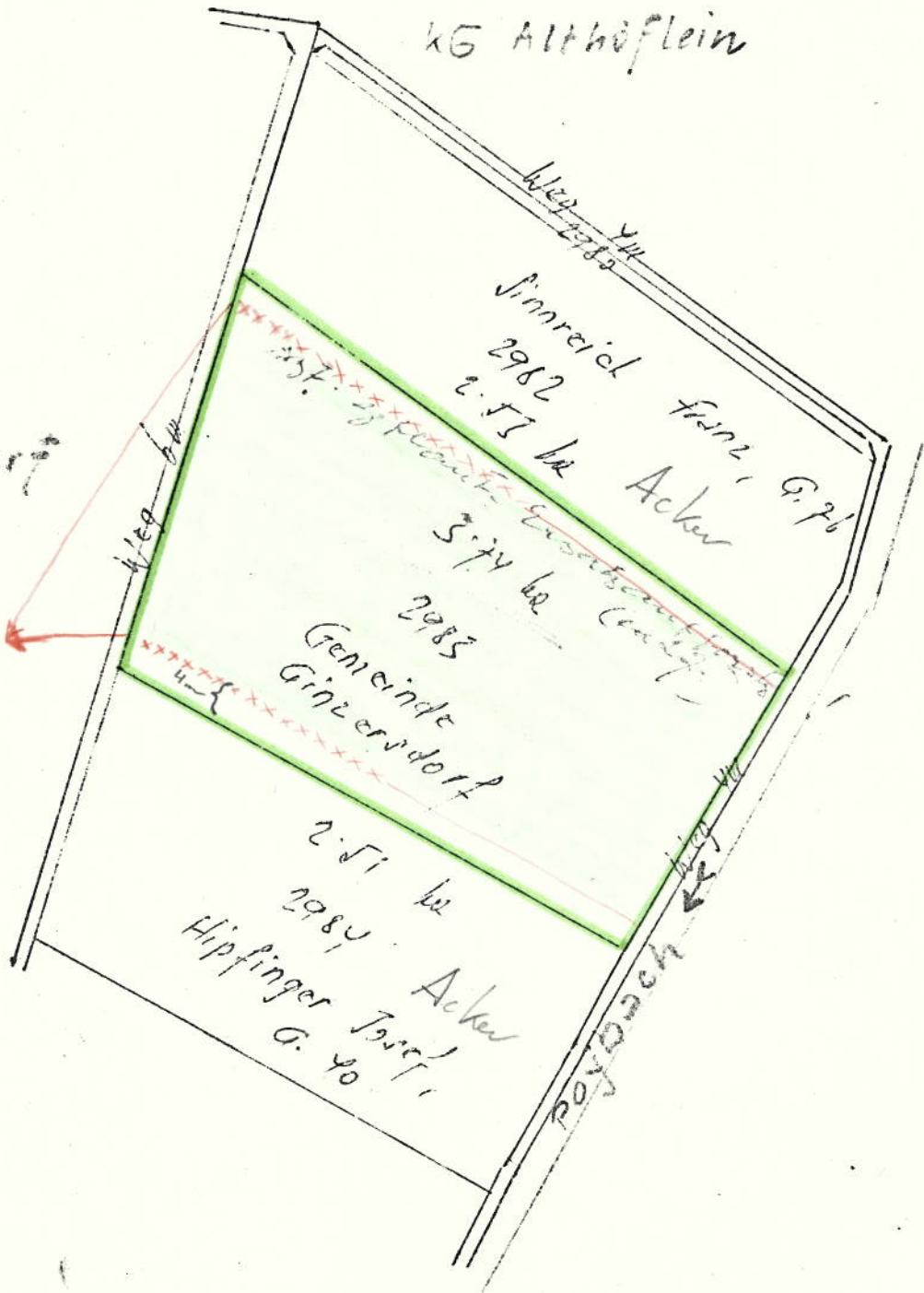


R. Cobry.
ca. 11,5 m

Gemeinde Groß-Krot



KG-Ginzersdorf

Stauchritzen

7: 2880

Gemeinde Ginzersdorf,
allgem. Franz, Bauer
Ginzersdorf, 10

vor der Kommassierung

HARRERSDORF

ALTHÖFLEIN

Thal Acker

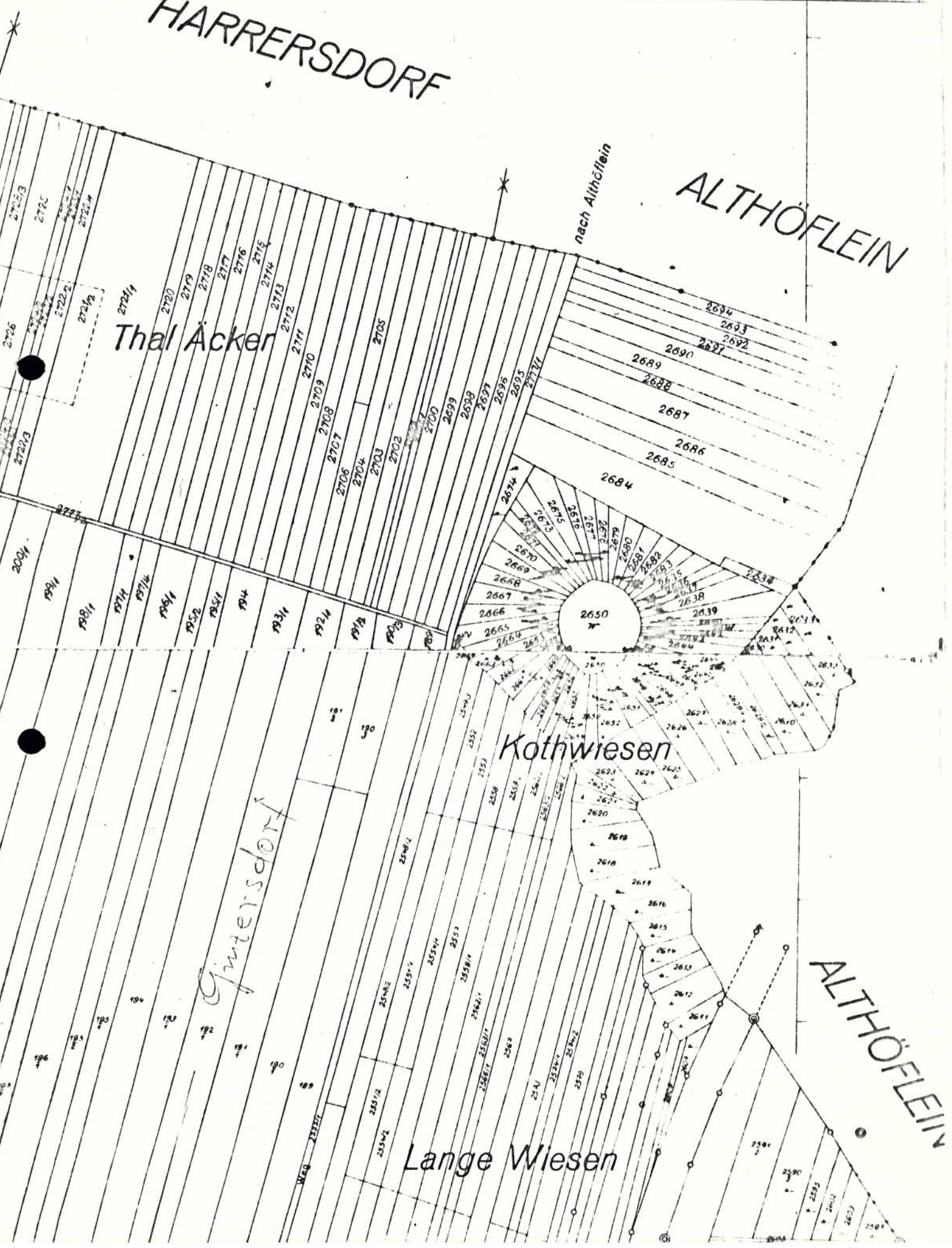
nach Althöflein

Kothwiesen

Gintersdorf

ALTHÖFLEIN

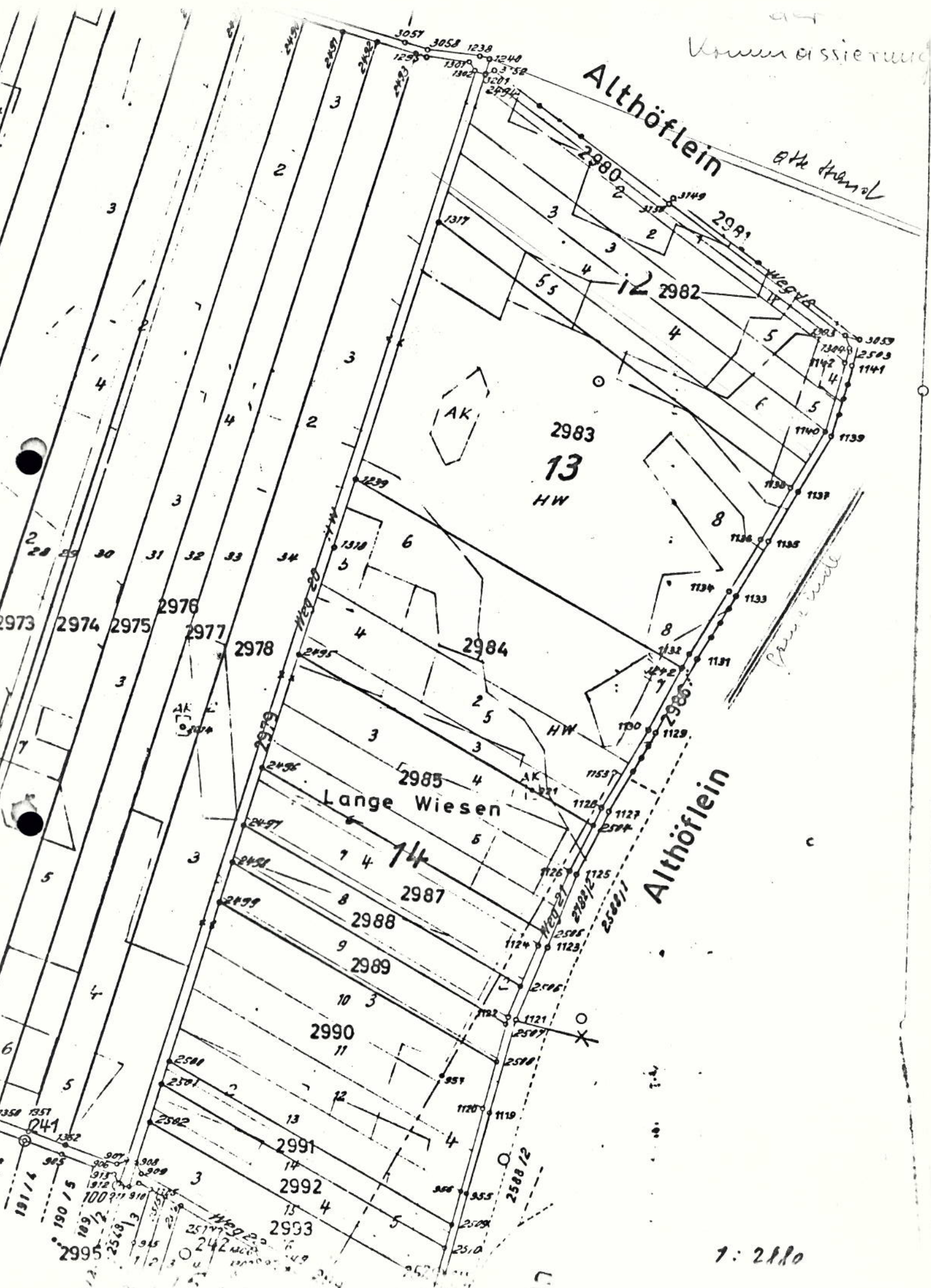
Lange Wiesen



Unverändert

Althöflein

alte Kanal



1:2180

HARRERSDORF

altbestand



Ginzersdorf

7:5760

Hofäcker

Hofäcker

Hofäcker

Lange Wiesen

ALHÖFLEIN

13/5

12/5

11/5

10/5

Gasstation

Lichtleitung

NEUMAS

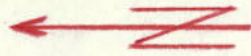
Ld. St. 3039

deräcker

St. Elisabeth

ACH HEUBACHEN

KG Fingersdorf ver 2

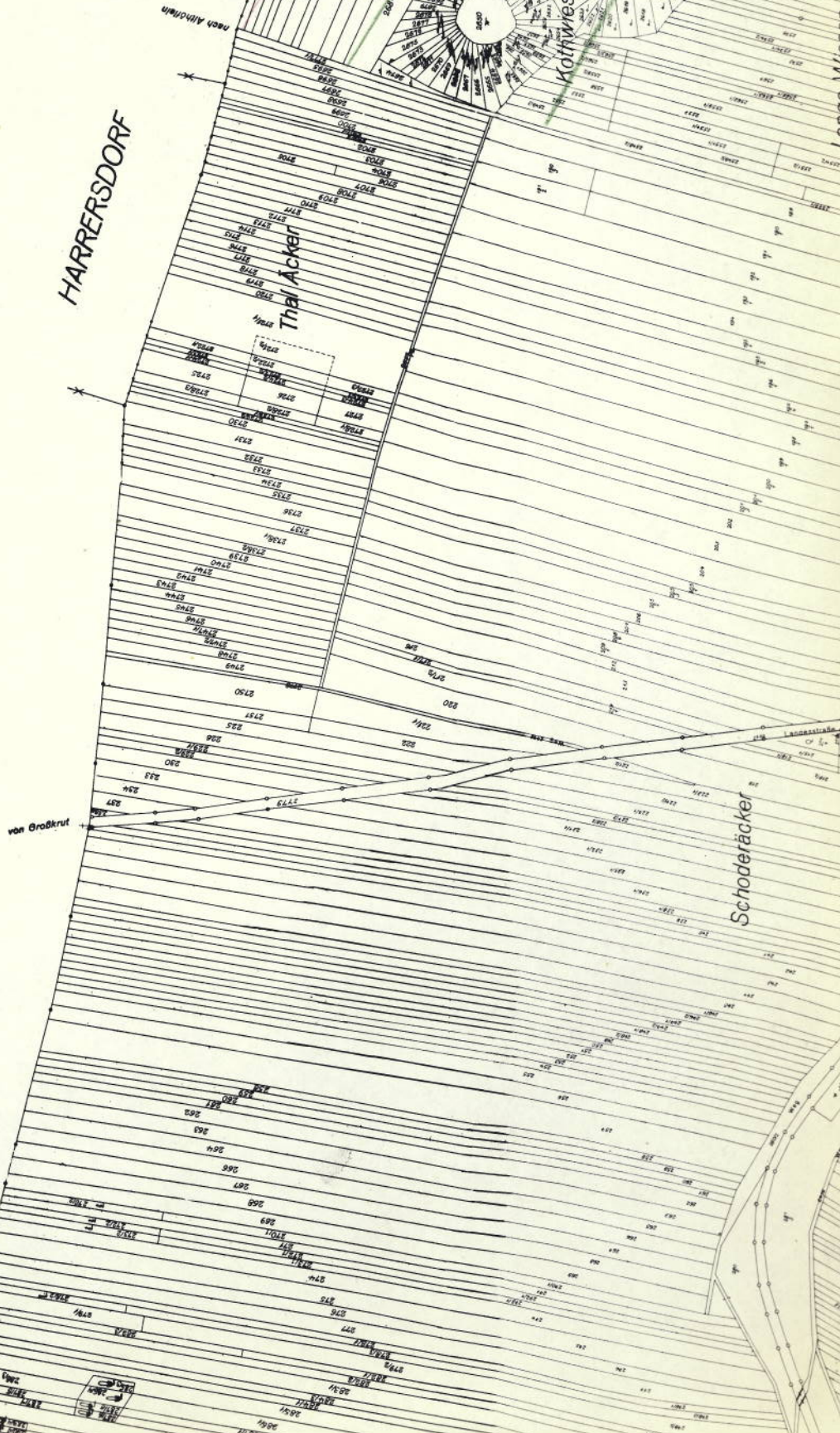
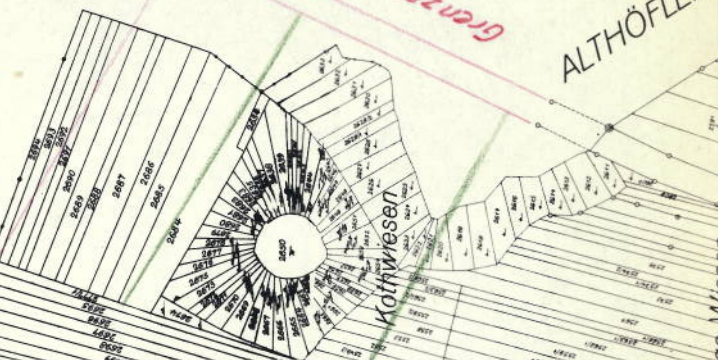


1:5760

Granzegulterung

ALTHÖFLEIN

HARRERSDORF



GROSZKRUT

Schoderacker

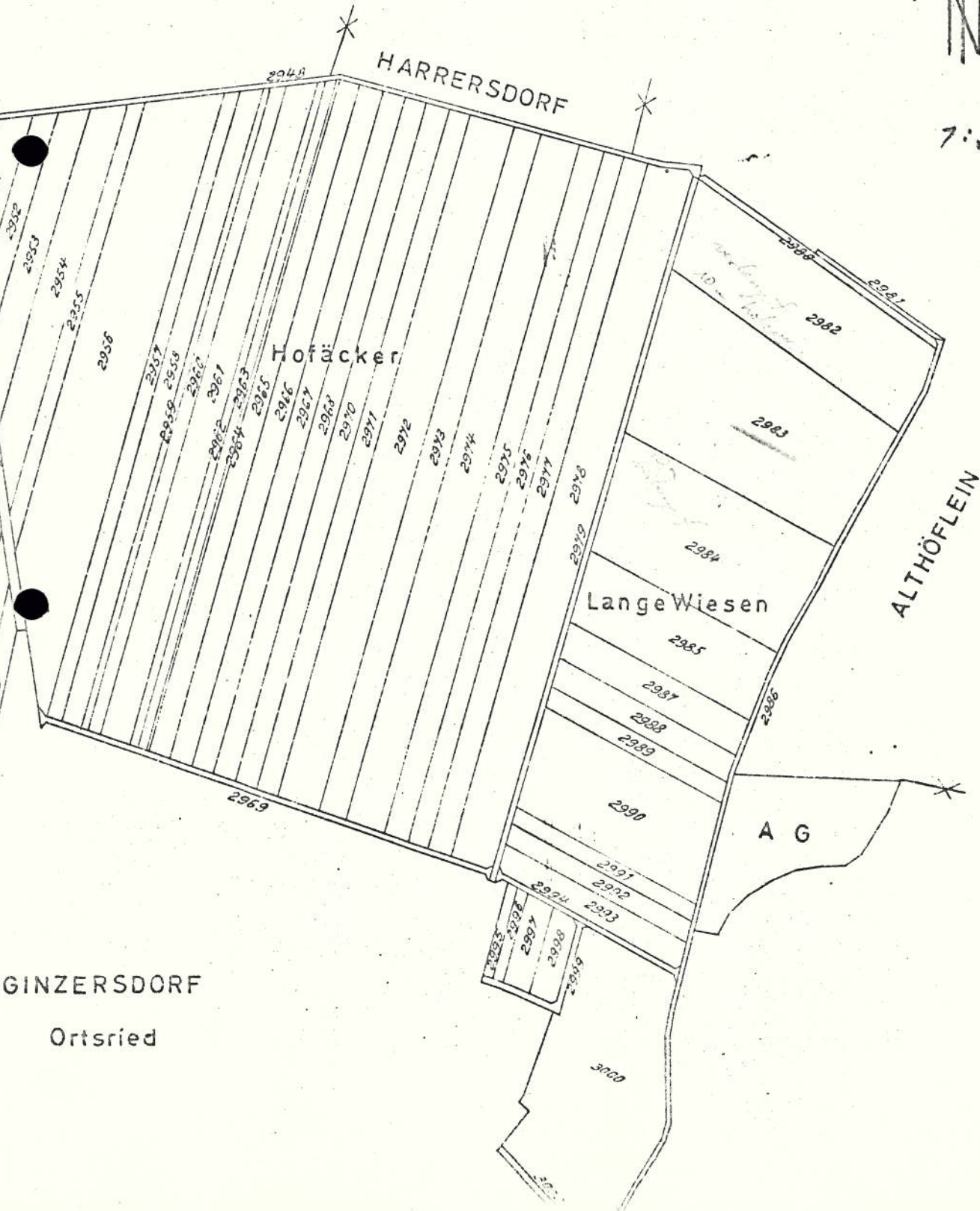
von Großkrut

KG Ginzersdorf nach $\text{Z} 388.900.00$

29.500.00



1:5760



~ 1:1200

Naturdenkmal 'Quelle u. Gehölz'

Urtica dioica

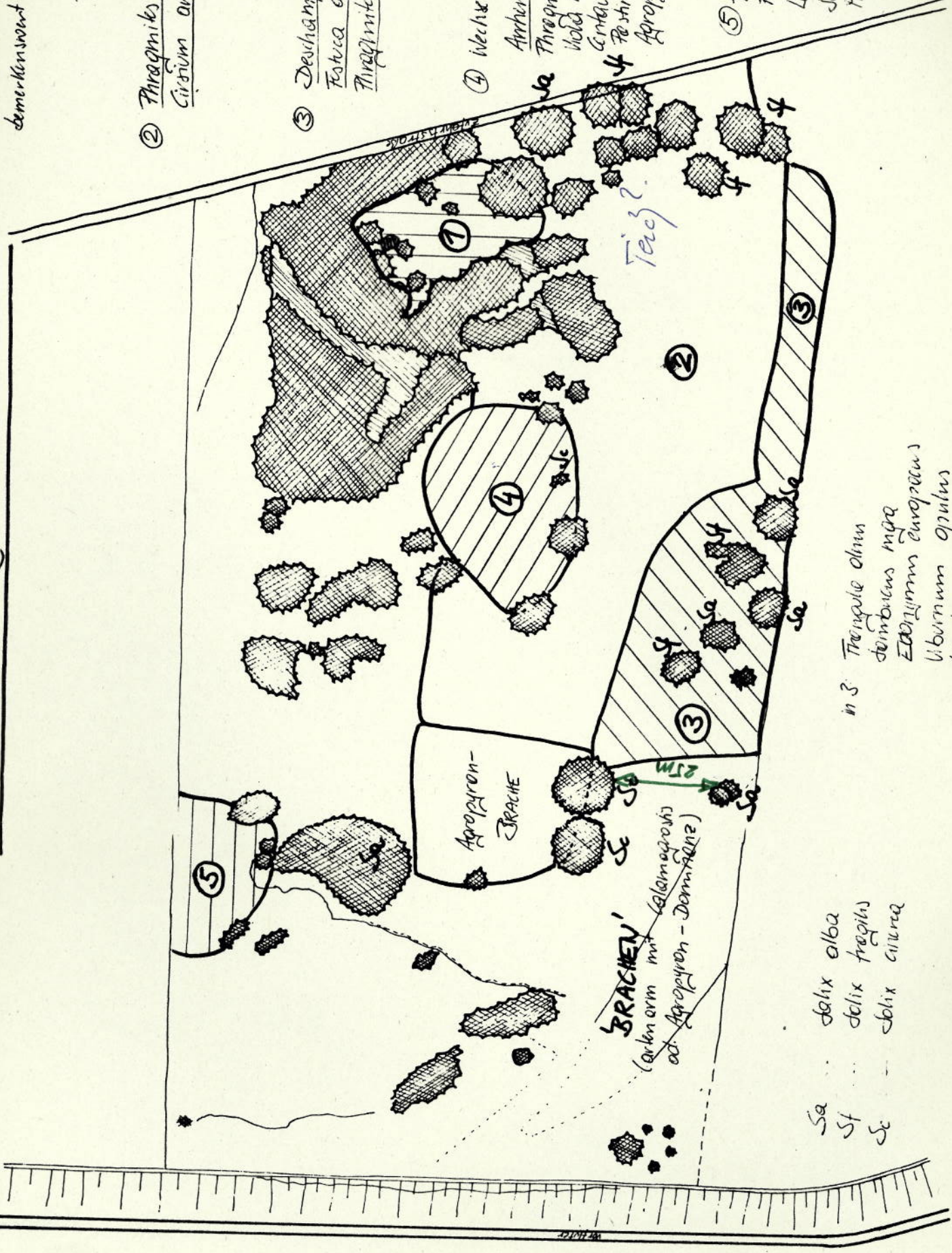
demerkenswert: Teucrium scordium
Rumex hydrocotyloides
Rorippa austriaca

② Thymus communis
Cirsium arvense

③ Deschampsia cespitosa
Festuca arundinacea
Thymus communis

④ Weichstrochene Wiese
Anthriscum elatius
Thymus communis
Viola hirta, densiflora hirta
Centauria jacea
Festuca ovina
Agropyron repens

⑤ Festuca rubra
F. rubra
Leontodon hyridus
Scabiosa ochroleuca
Medicago ovata
Melilotus
Linaria vulg.



in 3: Trigonotis alba
demibucus nigra
Edogonum europaeus
Viburnum opulus
Ligustrum vulgare

Sa
St
Se
Salix alba
Salix fragilis
Salix alba